

TMT Division

We would like to introduce ourselves as a quality steel producer of Indian Steel Industry having most modernized steel plant. The Company has been awarded ISO-9001:2008 certification by IRQS for manufacturing and supply of TMT Bars from SAIL Billets under the Brand name of "BSTL TMT 500D",

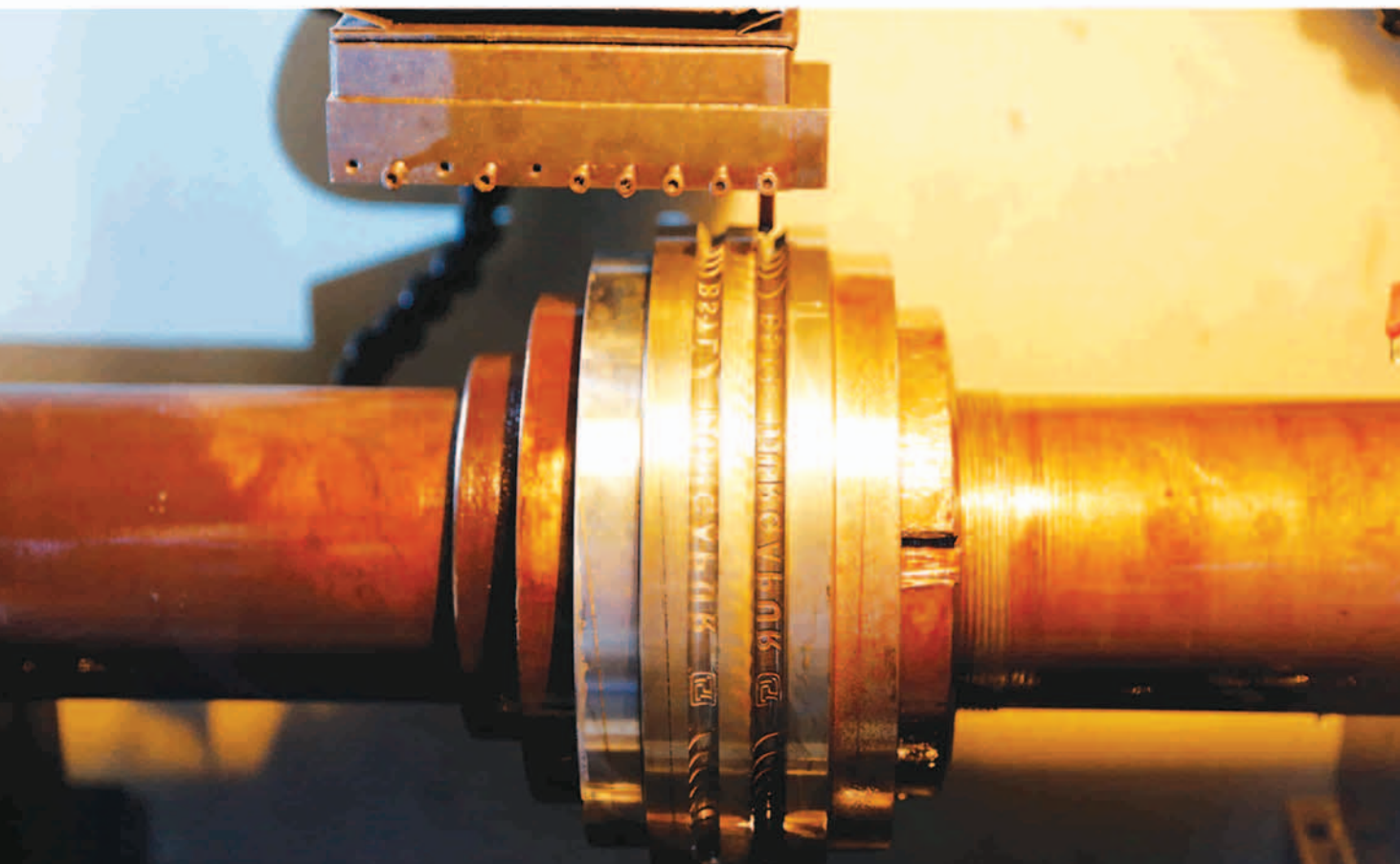
We manufacture TMT Bars from Size 8mm to 25mm in Grades Fe-415, 415D, 500 & 500D as per IS 1786 : 2008, BST INFRA TECH LTD. TMT bars have high strength and good ductility, which make them especially suitable for high rise buildings, even in earthquake zones.

BSTL offers value, reliability and innovation at the quality conscious for the burgeoning construction



Industry, domestic construction, engineering, power, railway, DRDA, automotive, MES and defense industries. It plans to enhance its capacity, manifold through organic growth and investments. BSTL leads in R&D and technology, holds sizeable captive supplies of raw materials and operates extensive distribution networks for global expertise with local customer service.

TMT DIVISION



Specification	CHEMICAL COMPOSITION					MECHANICAL PROPERTIES				
	Grade	C% Max	P% Max	S% Max	S&P Max	Yield Strength N/mrtf	Tensile Strength N/mm2	Elongation %Min	Bend Test (Mandrel Dia As Per IS: 1786-2008)	
									Upto 25 mm	Above 25 mm
IS: 1786-2008	Fe415	0.30	0.060	0.060	0.110	415	485	14.5	3Φ	4Φ
	Fe415D	0.25	0.045	0.045	0.085	415	500	18.0	2Φ	3Φ
	Fe 500	0.30	0.055	0.055	0.105	500	545	12.0	4Φ	5Φ
	Fe 500D	0.25	0.040	0.040	0.075	500	565	16.0	3Φ	4Φ
BSTL DURGAPUR TMT Fe 500D	Fe415	0.25	0.050	0.050	0.100	450	520	18.0	3Φ	4Φ
	Fe415D	0.20	0.040	0.040	0.080	450	530	20.0	2Φ	3Φ
	Fe 500	0.25	0.050	0.050	0.100	530	560	15.0	4Φ	5Φ
	Fe 500D	0.20	0.035	0.035	0.070	530	580	18.0	3Φ	4Φ

Size	BIS STANDARD				BSTL DURGAPUR TMT STANDARD		
	specified Weight gm./m	Tolerance Limit (gm./m) IS : 1786-2008	Permissible Weight Variation	Individual Sample % Variation	Weight Tolerance gm./m	Weight Variation gm./m	% Variation
8mm	395	367-423	056	±7	370-400	030	±5
10mm	671	574-660	086	±7	580-620	040	±5
12mm	888	844-932	088	±5	860-900	040	±3
16mm	1578	1500-1658	157	±5	1510-1610	100	±3
20mm	2465	2391-2539	148	±3	2415-2514	099	±2
25mm	3850	3736-3967	231	±3	3774-3928	154	±2